



Nice and Santa Margherita Ligure

Europe & Mediterranean coasts / Nice to Nice

From 10/15/2026 to 10/17/2026 - 3 days / 2 nights ♦ EXTEND YOUR STAY IN A CLUB MED RESORT: Opio en Provence



CRUISES CLUB MED 2

Welcome aboard Club Med 2, for a unique experience that provides a gateway to the world. Elegance and comfort are the essence of this magnificent 5-masted sailing ship

NICE AND SANTA MARGHERITA LIGURE

From 10/15/2026 to 10/17/2026 - 3 days / 2 nights

EUROPE & MEDITERRANEAN COASTS / NICE TO NICE



YOUR CRUISE

Days	Stages	Arrival	Departure	Nautical Hall*
1 - Thursday	Nice		19:30	Closed
2 - Friday	Santa Margherita Ligure	08:00	18:00	Without waterskiing
3 - Saturday	Nice	07:00		Closed

Day 1: Boarding from 16h to 18h Day 3: Landing from 9h to 11h

*Les conditions météo et les administrations locales font autorité pour l'ouverture du hall nautique au mouillage.

The information in this document is accurate as of its publication date 06/05/2026 but may be subject to change. For the most current and complete information, please contact your agency or visit the Club Med website. All images are for illustrative purposes only and are not legally binding.



YOUR ITINERARY



DAY 1 - THURSDAY 15 OCTOBER

NICE

From markets to the uber famous Promenade, it cultivates a love of flowers and the arts. It is full of vitality with ambiances that range from neoclassical elegance to the up-beat tempo of the old quarter. Boat docked, no water sports. Boarding and disembarkation port of call.

DAY 3 - SATURDAY 17 OCTOBER

NICE

From markets to the uber famous Promenade, it cultivates a love of flowers and the arts. It is full of vitality with ambiances that range from neoclassical elegance to the up-beat tempo of the old quarter. Boat docked, no water sports. Boarding and disembarkation port of call.

DAY 2 - FRIDAY 16 OCTOBER

SANTA MARGHERITA LIGURE

Set in a protected bay, Santa Margherita Ligure is considered the pearl of Tigullio. Its ancient history, dating back to Roman times, has been tumultuous over the centuries, the town having been destroyed, rebuilt and conquered several times by Saracen pirates. Ship at anchor, nautical hall closed.

YOUR EXCURSIONS

DAY 1 - THURSDAY 15 OCTOBER

NICE / MEDIEVAL EZE AND ITS EXOTIC GARDEN*

Docked until 19:30

After admiring the wonderful landscapes of the Riviera through the middle cornice, you will visit one of the most picturesque perched villages in the region. You will walk through the alleys of the small medieval village of Eze to discover all the hidden charm. You will then visit the exotic garden that fills the ruins of the medieval castle and contemplate the most beautiful view of the Côte d'Azur and the Bay of Beaulieu in particular.

Intermediate



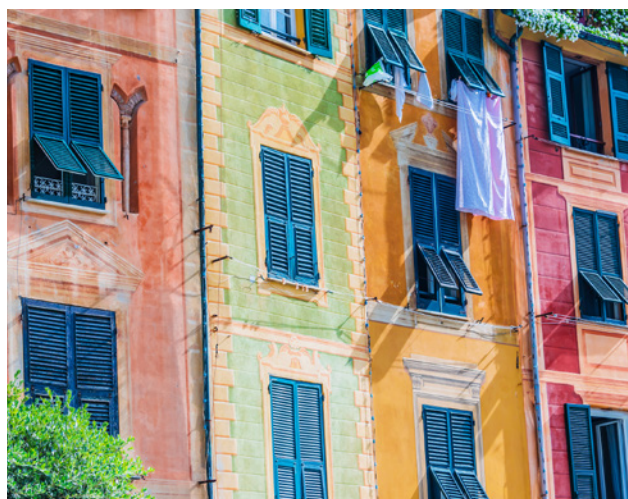
DAY 2 - FRIDAY 16 OCTOBER

SANTA MARGHERITA / WALKING TOUR IN PORTOFINO (1/2 DAY)*

Docked until 18:00

After only 15 minutes of sailing you reach Portofino and your time discovering Portofino begins in the main square, where the guide will offer some general information on the quaint village. Leaving the square the tour passes through the narrow streets of this charming town, which are surrounded by beautiful villas with gardens full of tropical plants and Mediterranean olive trees. (walking during 2hours)

All levels



* Excursion available at a preferential rate when booking your cruise. Subject to a minimum number of participants.

The information in this document is accurate as of its publication date 06/05/2026 but may be subject to change. For the most current and complete information, please contact your agency or visit the Club Med website. All images are for illustrative purposes only and are not legally binding.



YOUR EXCURSIONS

DAY 2 - FRIDAY 16 OCTOBER

SANTA MARGHERITA / DÉCOUVERTE DE GENES (1/2 DAY)*

Docked until 18:00

After an hour's drive to reach Genoa by the motorway. You will discover one of the oldest Italian maritime republics and one of the main ports of the Mediterranean Sea. In the company of your guide you will walk through the heart of the old historic center of Genoa, through Piazza Banchi along the old narrow streets to the beautiful Gothic Romanesque church of San Matteo.

All levels

DAY 3 - SATURDAY 17 OCTOBER

NICE / MEDIEVAL EZE AND ITS EXOTIC GARDEN*

After admiring the wonderful landscapes of the Riviera through the middle cornice, you will visit one of the most picturesque perched villages in the region. You will walk through the alleys of the small medieval village of Eze to discover all the hidden charm. You will then visit the exotic garden that fills the ruins of the medieval castle and contemplate the most beautiful view of the Côte d'Azur and the Bay of Beaulieu in particular.



Intermediate

* Excursion available at a preferential rate when booking your cruise. Subject to a minimum number of participants.

The information in this document is accurate as of its publication date 06/05/2026 but may be subject to change. For the most current and complete information, please contact your agency or visit the Club Med website. All images are for illustrative purposes only and are not legally binding.



IMPORTANT INFORMATION

WHAT YOU NEED TO KNOW

To make the most of your cruise with complete peace of mind, here is some information to keep in mind.



CUSTOMS FORMALITIES

For all UK citizens, a valid passport is essential when you travel abroad. A full 10-year passport is required for holidays to all countries featured on our website. The passport must be valid for at least 6 months beyond your return date with one blank visa page. Make sure your passport is valid and check with the embassy or the consulate of your destination country if you need a visa for your chosen destination prior to travel. It is vital that the name given when booking your holiday (printed on the ticket and itinerary) is exactly the same as written on your passport. Any child, however old, must have his/her own passport. Please note Club Med cannot be held responsible for any issue with regards to passport or visas.

HEALTH FORMALITIES

Safe Together.

Club Med has implemented new hygiene and safety measures to offer you peace of mind and a most joyful experience.

As part of the fight against Covid-19, health measures at the borders are being reinforced and may in particular require a virological screening

test (for example PCR test) depending on your country of origin, transit or destination before your departure and/or before your return. We suggest you obtain more information from the consular services of the countries concerned or on the website of the Ministry of Foreign Affairs of your nationality and/or place of residence. Recommended vaccinations: diphtheria, polio, tetanus, hepatitis A and B and typhoid. Pregnant women who do not need constant medical supervision may come aboard, upon presentation of a medical certificate showing their due date and certifying that their pregnancy is compatible with the cruise. The final day of the cruise must be before the end of the 26th week of pregnancy. A doctor and a nurse are present on board.

BOARDING ARRANGEMENTS

Meeting place for boarding

Port of Nice. Commercial wharf (or sometimes Quai Admiral Infernet). The 2 docks are close, the port is small. We can not miss to see the CM2. Airport / port distance: 9 km (about 30 minutes). Paid open parking (located Quai Amiral Infernet). Website: www.riviera-ports.com.

Prolong your holiday IN A RESORT

- Our Resort Opio en Provence