

Japan

# Kiroro Grand



## Resort Highlights

- Encounter undiscovered culture as you visit native Hokkaido and experience an enchanted forest inspired design
- Enjoy a cultural fusion of French and Hokkaido culture and cuisines with our international F&B offerings
- Soak into an authentic Japanese onsen experience at Club Med's First Japanese Onsen
- Indulge in the calming warmth of water from natural hot springs, and let your muscles relax





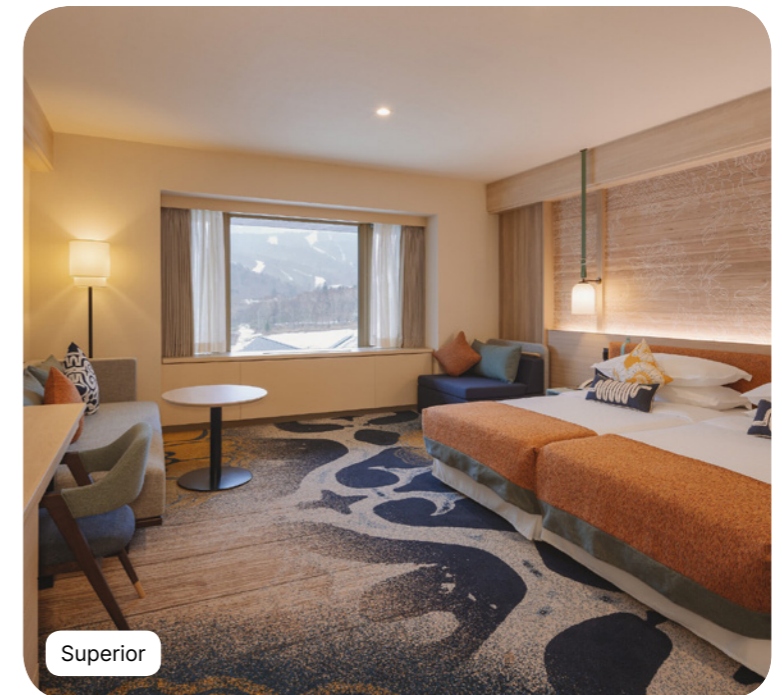
# Summary

<b>Accommodation</b>	<b>4</b>
<b>Sports &amp; Activities</b>	<b>12</b>
<b>Club Med Spa by Mandara*</b>	<b>16</b>
<b>Excursions*</b>	<b>17</b>
<b>Childrens' Services</b>	<b>18</b>
<b>Restaurants &amp; Bars</b>	<b>20</b>
<b>Practical Information</b>	<b>22</b>





# Accommodation





## Superior



Name	Min. m <sup>2</sup>	Highlights	Capacity
Superior Room	36		1 - 2
Junior Family Superior Room	37		1 - 3
Family Superior Room	42		1 - 4

### Equipment

- Air conditioning
- Telephone
- TV Screen
- Wi-Fi Access
- Kettle - Coffee/tea making facilities
- Mini fridge at your disposal
- Iron and ironing board in the room
- Umbrella
- Safe deposit box
- Heating
- Electricity : 100-127 V

### Bathroom

- Shower
- Hair dryer
- Amenities : shampoo, shower gel, body lotion
- Bathtub
- Bathrobe
- Slippers

### Services

- Concierge service
- Luggage service
- Laundry service (extra charge)
- Cleaning on demand

## Deluxe



Name	Min. m <sup>2</sup>	Highlights	Capacity
Junior Family Deluxe Room	43		1 - 3
Junior Family Deluxe Room - Tatami	65	Balcony	1 - 3

### Equipment

- Air conditioning
- Telephone
- Sofa
- TV Screen
- Wi-Fi Access
- Kettle - Coffee/tea making facilities
- Mini fridge at your disposal
- Iron and ironing board in the room
- Umbrella
- Safe deposit box
- Baby bed(s)
- Heating
- Electricity : 100-127 V

### Bathroom

- Bathtub
- Shower
- Hair dryer
- Amenities : shampoo, shower gel, body lotion
- Bathrobe
- Slippers

### Services

- Concierge service
- Luggage service
- Minibar (non-alcoholic drinks) - refilled weekly
- Laundry service (extra charge)
- Cleaning on demand



## Suite



Name	Min. m <sup>2</sup>	Highlights	Capacity
Junior Family Suite - Mobility Accessible	60		1 - 3
Junior Family Suite	60		1 - 3
Family Suite	72		1 - 4
Master Family Suite	139		1 - 5

### Equipment

- Air conditioning
- Telephone
- TV Screen
- Wi-Fi Access
- Kettle - Coffee/tea making facilities
- Iron and ironing board in the room
- Umbrella
- Safe deposit box
- Heating
- Electricity : 100-127 V

### Bathroom

- Bathtub
- Bathrobe
- Slippers
- Hair dryer
- Shower
- Spa brand amenities : shampoo, shower gel, body lotion

### Services

- Inclusive of room service for continental breakfast
- Priority booking at Club Med Spa
- Concierge service
- Priority booking at the Speciality Restaurant
- Minibar (non-alcoholic drinks) - refilled daily
- Luggage service
- Turn down service
- Laundry service (extra charge)
- Cleaning on demand



# Sports & Activities



## Land Sports & Leisure

	Group Lessons	Free Access	At extra cost course	Min. age (years)	Dates of Availability
Golf*	All levels		✓	8 years old	Always
Frisbee					Always
Biking		✓		8 years old	Always
Hiking	All levels			4 years old	Always
Swimming Pool	Initiation group lessons			16 years old	Always
Fitness	Group lessons for all levels			16 years old	Always
Mountain board		✓		11 years old	Always
Park golf		✓		8 years old	Always
Tennis	Group lessons for all levels			4 years old	Always
Ioga	Group lessons for all levels / All levels			8 years old	From 28-06-2025 to 27-09-2025
Cardio-Training	Free access			18 years old	Always
Disc golf		✓		12 years old	Always
Team sports	Free access			8 years old	Always
Table tennis	Free access				Always
Entertainment		✓			Always
Herbal Tea Class					Always
Excursion*		✓	✓		Always

\*on demand  
 \*\*Depending on weather conditions  
 \*\*\* Pre-bookable green fee packages at extra cost







## Club Med Spa by Mandara\*



Discover one of the most ancient of Asian rituals, blending beauty and exotic luxury. Combining Balinese traditions and European techniques, Mandara makes the art of treatment an experience of generosity. Since the dawn of time, this passion for equilibrium and the moment of grace touches the very soul.



\*on demand

## Excursions\*



### **Nature getaways :**

Blue Cave Cruise Boat & Rafting

### **Connecting with culture :**

Music Box DIY / Otaru cruising boat - Night / Glassblowing / Horse riding / Kimono Rental / Otaru cruising boat - Day

:

Sense of adventure

\*on demand



# Childrens' Services



## Childrens' Clubs

Age Range	Name	Included Activities	On demand activities	Dates of Availability
2 to 3 years	Petit Club Med*	Creative workshops, Early learning, Walks		Always
4 to 10 years	Mini Club Med +	Aulas em grupo, Hiking walks, Tennis group lessons, Mountain biking		Always
11 to 13 years	Teens Club Med 11-13 years old	New activities, Aulas em grupo, Hiking walks, Tennis group lessons		Always
14 to 17 years	Chill Pass Club Med 14-17 years old	New activities, Aulas em grupo, Disc golf, Hiking walks, Tennis group lessons		Always

\*on demand

## Childrens' Activities

Age Range	Included Activities	On demand activities
2 to 3 years	Nature quest, Family show time, Family "Big Snack"	
4 to 10 years	Nature quest, Club Med Amazing Family!, Family show time, Free access to golf Resort's facilities, Family "Big Snack"	
11 to 13 years	Nature quest, Club Med Amazing Family!, Family show time, Free access to golf Resort's facilities, Family "Big Snack"	
14 to 17 years	Nature quest, Club Med Amazing Family!, Family show time, Free access to golf Resort's facilities, Family "Big Snack"	

## Childrens' Services

Age Range	Included activities & facilities	On demand activites & facilities
0 to 2 years	Club Med Baby Welcome	
2 to 3 years	Infirmary service, Lifeguard	Pyjamas Club
4 to 10 years	Infirmary service, Lifeguard	Pyjamas Club



## Restaurants & Bars



### Bars

**Yotei**  
Main bar

## Restaurants

**Yoichi**  
Main Restaurant



Discover our signature buffet and relish Japanese delicacies made from the finest seafood, alongside a tempting selection of Asian and international dishes, all fresh from our live cooking stations. The contemporary decor pays tribute to the enchanting beauty of Hokkaido's forests.

**The Ogon**  
Specialty Restaurant



Immerse in the tradition of comforting hotpots at Ogon. Drawing inspiration from Japanese, Korean, Chinese, and Thai cuisines, this interactive dining experience showcases fresh Otaru seafood, Hokkaido meat, and vegetables. A must-try dining experience to share with loved ones.

**The Ebisu\***  
Specialty Restaurant



A quintessential dish in Japanese cuisine, Sushi is a highlight at the Ebisu. Pair your meal with local sake or shochu for a truly enhanced flavour journey. An unmissable dining experience to share with friends and family.

**The Kaen**  
Specialty Restaurant



The irresistible aroma of sizzling Yakiniiku truly captures the essence of this Japanese BBQ delicacy, featuring quality beef cuts & fresh seafood perfectly paired with Hokkaido vegetables, fragrant rice and kimchi. Open for dinner, Kaen offers an authentic setting and dining experience.



# Practical Information



## Address

### CLUB MED KIRORO GRAND

128-1 Aza-Tokiwa, Akaigawa-mura, Yoichi-gun, Hokkaido  
046-0593, Japan

No minimum age

## Hygiene & Safety

Safe Together. Club Med has implemented new hygiene and safety measures to offer you peace of mind and a most joyful experience.

## Easy arrival

Easy Arrival service\*

Register & manage your details online, we will have everything ready for your arrival :

Easy Check in – check out

Children's club enrolment

Club Med online Account

Available on your Member Space

\*Selection of services according to Resorts

## CHECK-IN/CHECK-OUT

Times of arrival/departure from the Resort: ·

For GM arrival with stay package / stay package inclusive

- Times of arrival/departure from the Resort: For all stays, arrival between 3pm and 8pm.  
G.M@s who arrive early may be able to have lunch at extra cost, subject to availability.

- Availability of rooms: Between 3pm and 8pm

For GM arrival with flights booked with Club Med:

-Room to be allocated as soon as possible according to availability

-F&B service access to resort facilities and F&B services are included from arrival until departure time ·

Rooms to be vacated by 10 am on day of departure, for departure from the Resort by 5 pm (breakfast and lunch included). Should any of these times change, the revised times will be given in your "Holiday Rendez-Vous".

## Nearest arrival points

➔ Chitose airport (110 mins.) ; Chitose airport (120 mins.) ; Chitose airport - Private transfer (90 mins.)

## My Club Med App

My Club Med App : All you need is My Club Med App - your ideal travel companion to prepare and organize your stay. Discover the Resort map, facilities and activities, and enjoy dedicated services to make the most of your stay.

Download My Club Med App on the App Store or Google Play.