

Japan

# Tomamu Hokkaido



## Resort Highlights

- Discover the best of Hokkaido through excursions, whether it's golfing in the perfectly cool weather or visiting the famous flower fields and Blue Pond.



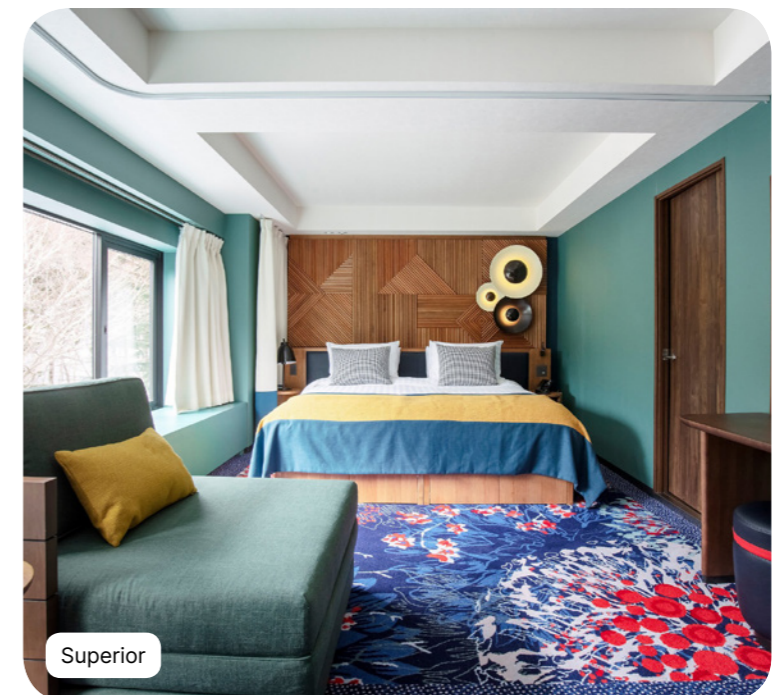
# Summary

<b>Accommodation</b>	<b>4</b>
<b>Corporate events</b>	<b>12</b>
<b>Sports &amp; Activities</b>	<b>18</b>
<b>Swimming Pools</b>	<b>20</b>
<b>Excursions*</b>	<b>23</b>
<b>Restaurants &amp; Bars</b>	<b>24</b>
<b>Practical Information</b>	<b>26</b>



# Accommodation

341 rooms



# Superior



Name	Min. m <sup>2</sup>	Highlights	Capacity
Family Superior Room - Mountain View	38	Mountain view	1 - 4
Superior Room	38		1 - 2
Junior Family Superior Room	42		1 - 3
Family Superior Room	38		1 - 4
Master Family Superior Room	64	Children's Area	1 - 5
Superior Room - Mobility Accessible	38		1 - 2
Interconnecting Junior Family Superior Rooms	84		1 - 6

## Equipment

- Air conditioning
- Telephone
- TV Screen
- Wi-Fi Access
- Kettle - Coffee/tea making facilities
- Mini fridge at your disposal
- Iron and ironing board in the room
- Safe deposit box
- USB socket
- Heating
- Electricity : 100-127 V

## Bathroom

- Slippers
- Hair dryer
- Magnifying mirror
- Amenities : shampoo, shower gel, body lotion

## Services

- Laundry service (extra charge)
- Luggage service

## Deluxe



Name	Min. m <sup>2</sup>	Highlights	Capacity
Deluxe Room	38	Lounge area	1 - 3

### Equipment

- Air conditioning
- Baby bed (Must be pre-booked)
- Baby equipment kit
- Telephone
- Sofa
- TV Screen
- Wi-Fi Access
- Kettle - Coffee/tea making facilities
- Iron and ironing board in the room
- Safe deposit box
- USB socket
- Heating
- Electricity : 100-127 V

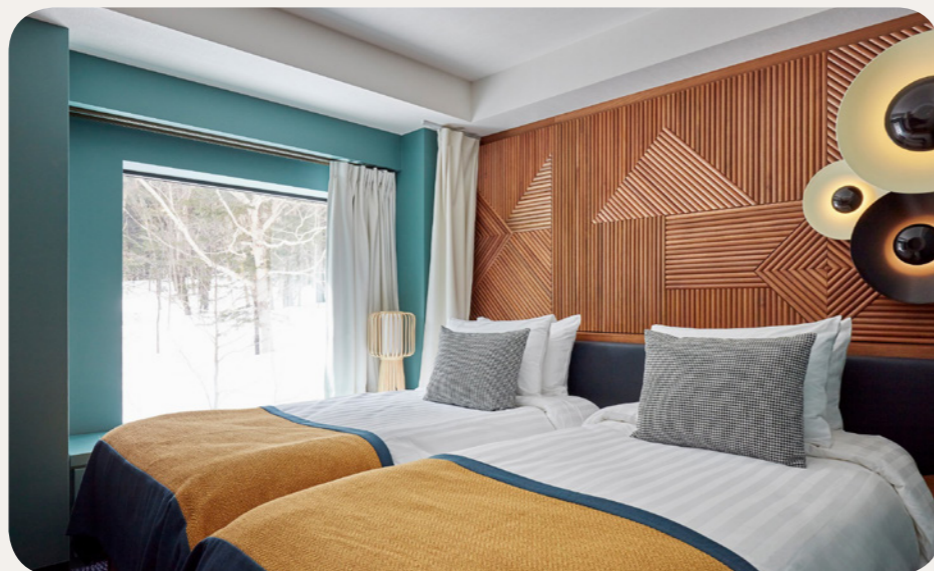
### Bathroom

- Bathrobe
- Slippers
- Hair dryer
- Amenities : shampoo, shower gel, body lotion
- Bathtub
- Magnifying mirror

### Services

- Laundry service (extra charge)
- Luggage service
- Minibar (non-alcoholic drinks) - refilled weekly

**Suite**



Name	Min. m <sup>2</sup>	Highlights	Capacity
Family Suite	55	Fir Tree View, Lounge area, Children's Separate Room	1 - 5
Master Family Suite – Duplex	72	Split-level family room, Children's Separate Room, Living Room	1 - 5

**Equipment**

- Air conditioning
- Baby bed (Must be pre-booked)
- Baby equipment kit
- Telephone
- TV Screen
- Wi-Fi Access
- Espresso machine
- Kettle - Coffee/tea making facilities
- Iron and ironing board in the room
- Safe deposit box
- USB socket
- Heating
- Electricity : 100-127 V

**Bathroom**

- Bathtub
- Shower
- Bathrobe
- Slippers
- Hair dryer
- Magnifying mirror
- Amenities : shampoo, shower gel, body lotion
- Bidet

**Services**

- Free lunch for G.M® who arrive before 3pm
- Luggage service in room
- Inclusive of room service for continental breakfast
- Turn down service
- Laundry service (extra charge)
- Cleaning service at a time of your choosing
- Minibar (non-alcoholic drinks) - refilled daily

# Corporate events

Convention, seminar, privatisation, incentive, team building...  
Whatever your needs, our experts will work with you from A to Z  
to design your event.



## Meeting rooms



Meeting Room / Capacity	In U shape	In conference	In classroom	In theater
Théâtre - Espace Ouvert	-	-	-	250
Kakushin Suru 60 m <sup>2</sup>	30	30	40	50
Sozo-Tekina 64 m <sup>2</sup>	30	30	40	50

### Included equipment

- Video projector & projection screen
- Wifi
- Paperboard
- Pencil and Flip chart
- Mineral water



# Enhance your event

From private cocktails to team building and coffee breaks...  
Create an event that reflects your image !



## Team Buildings & Events\*

To unite your teams and create unforgettable experiences, we offer a wide range of customised concepts, tailored events, and unique entertainment options designed to meet your expectations.

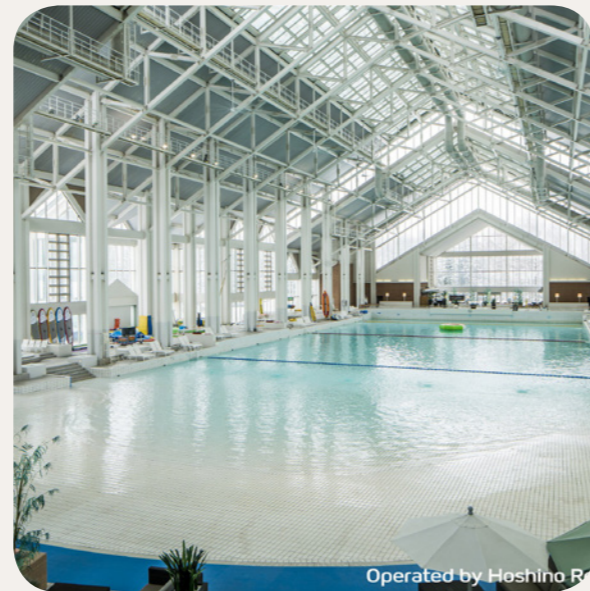
## Cocktails and Coffee breaks\*

Understanding that the success of your events also relies on private, convivial moments, we offer a range of exclusive cocktail and coffee break services tailored to your needs.



\*on demand

# Sports & Activities



## Land Sports & Leisure

	Group Lessons	Free Access	At extra cost course	Min. age (years)
Golf*		✓	✓	16 years old
Swimming Pool		✓		
Archery		✓		6 years old
Trapeze & Circus		✓		4 years old
Biking		✓		11 years old
Fitness	Group lessons for all levels			16 years old
Tennis	Initiation			4 years old
Hiking	Group lessons for all levels / All levels			8 years old
Entertainment		✓		
Bocceball	Free access			
Nature walk	Group lessons for all levels			
Pool table*			✓	
Table Tennis	Free access			
Japanese cooking class				
Cardio Training	Free access			16 years old
Excursion*		✓	✓	

\*on demand  
 \*\*Depending on weather conditions  
 \*\*\* Pre-bookable green fee packages at extra cost

# Swimming Pools



## Indoor swimming pool Mina Mina

Indoor Pool



G.Ms are offered free access to "Mina Mina Beach", which is the largest indoor wave pool in Japan. It is located right in front of the Resort.

Children are under the supervision of their parents or an accompanying adult.

**Heated**

## Excursions\*



### **Nature getaways :**

Bear Mountain / Furano & Biei Farm Sightseeing / River fishing

### **Sense of adventure :**

Kids rafting / Sorachigawa River Rafting

## Restaurants & Bars



### Bars

#### Unkai bar

Main bar  
492 seats inside /

#### The Nest Bar

Wine Bar  
45 seats inside /

## Restaurants



### Itara

#### Main Restaurant

940 seats inside /

Savour a variety of international and Japanese delights, including the freshest fish, from our main buffet restaurant. With 4 distinct spaces, each inspired by Hokkaido regions, the setting will surely surprise. Bucolic Valley, Farmhouse, Sea of clouds, and Rays of sun, with the Unkai Terrace (available in summer only), each offers a unique gastronomic adventure to share.

### Haku

#### Specialty Restaurant

136 seats inside /

Imagine the scent of fresh yakiniku steaming off the grill. Haku, our Hokkaido Resort speciality restaurant, prepares this beef Japanese delicacy to perfection paired with a selection of delicious side dishes to complement. Open for dinner, enjoy an authentic dining experience with a design inspired by Japanese indigenous tribes to cap off an unforgettable day.



# Practical Information



- |                                |   |                                   |   |                                  |  |
|--------------------------------|---|-----------------------------------|---|----------------------------------|--|
| Front desk<br><i>Réception</i> | La boutique                             | Baby corner<br><i>Biberonnere</i> | Mountain Center<br><i>Espace Montagne</i> | Circus<br><i>Cirque</i>          | Tennis                                 |
| Rooms<br><i>Chambres</i>       | Parking                                 | Petit Club Med                    | Pool<br><i>Piscine</i>                    | Archery<br><i>Tir à l'arc</i>    | Table tennis<br><i>Tennis de table</i> |
| Restaurant                     | Meeting Room<br><i>Salle de réunion</i> | Mini Club Med +                   | Fitness                                   | Bocceball<br><i>Pétanque</i>     | Cable car<br><i>Télécabine</i>         |
| Bar                            | Theatre<br><i>Théâtre</i>               | Teens Club                        | Cardio Training                           | Flying Trapeze<br><i>Trapèze</i> | Ski room                               |

## Address

**CLUB MED TOMAMU HOKKAIDO**  
**NAKA-TOMAMU**  
 Hokkaido  
 079-2204, Japan

No minimum age

## CHECK-IN/CHECK-OUT

Times of arrival/departure from the Resort

For GM arrival with stay package / stay package inclusive transfer only (flight not booked with Club Med):

For all stays, arrival between 3pm and 8pm. G.M@s who arrive early may be able to have lunch at extra cost, subject to availability.

Availability of rooms: between 3pm and 8pm.

Rooms to be vacated by 10am on day of departure, for departure from the Resort by 3pm (breakfast and lunch included).

Should any of these times change, the revised times will be given in your "Holiday Rendez-Vous".

For GM arrival with flights booked with Club Med:

- Room to be allocated as soon as possible according to availability
- Food & Beverage service access to resort facilities and F&B services are included from arrival until departure time

## Nearest arrival points

➔ Obihiro airport (70 mins.) ; Chitose airport (120 mins.) ; Chitose airport (110 mins.) ; Chitose Airport - Private transfer (60 mins.)

Tomamu railway station (5 mins.)