

Japan

# Tomamu Hokkaido



## Resort Highlights

- Explore the Colours of Hokkaido, with a fascinating excursion programme
- Witness the breathtaking Sea of Clouds from Unkai Terrace at sunrise
- Experience the fun at Mina Mina Beach, the largest indoor Wave Pool in Japan!
- Savour Farm-to-table Hokkaido speciality - Yakiniku barbecue
- Discover the flavour of Japan, with tasting sessions of Japanese whisky and sake

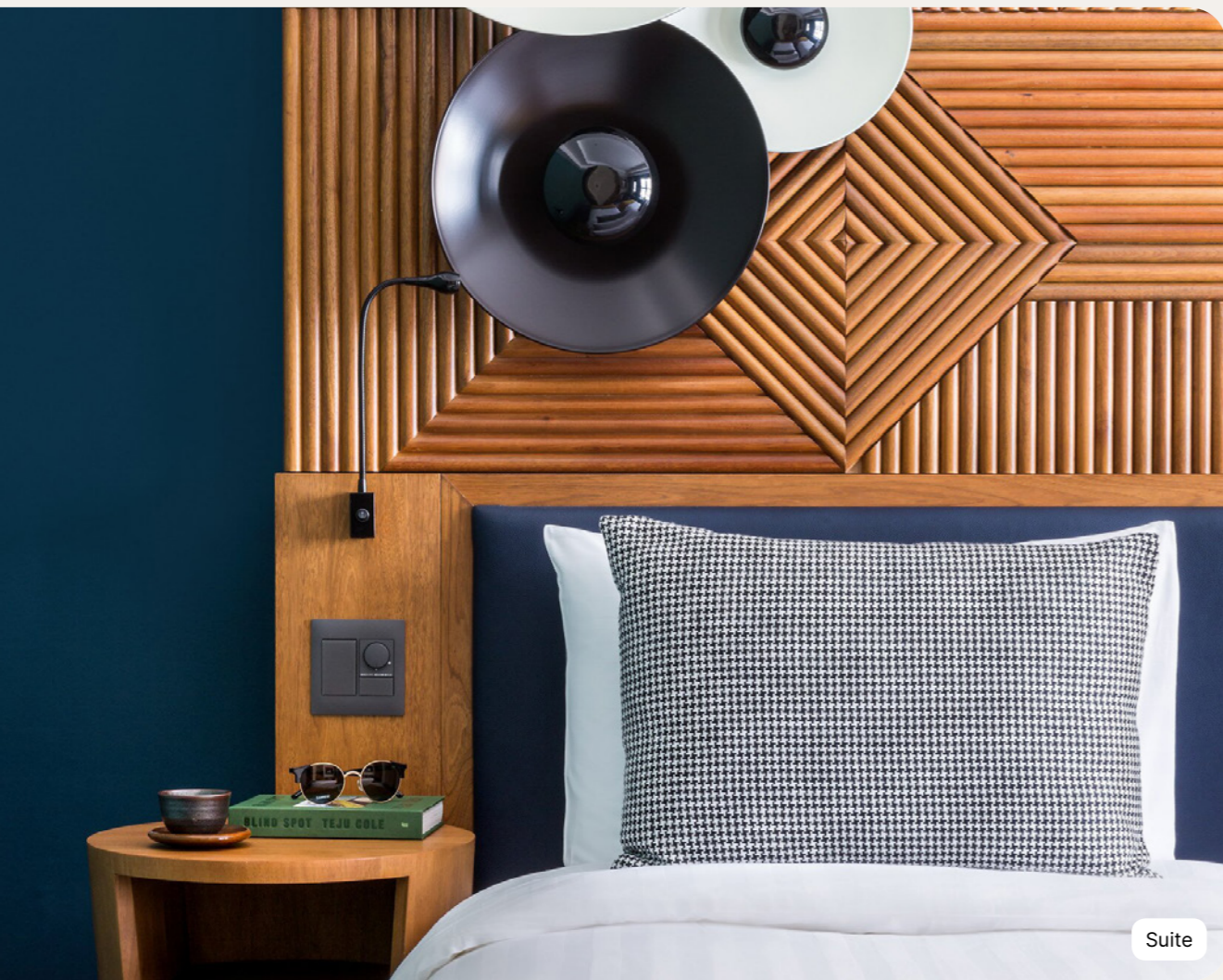


# Summary

<b>Accommodation</b>	<b>4</b>
<b>Sports &amp; Activities</b>	<b>12</b>
<b>Swimming Pools</b>	<b>14</b>
<b>Excursions*</b>	<b>17</b>
<b>Childrens' Services</b>	<b>18</b>
<b>Restaurants &amp; Bars</b>	<b>22</b>
<b>Practical Information</b>	<b>24</b>



# Accommodation



## Superior



Name	Min. m <sup>2</sup>	Highlights	Capacity
Family Superior Room - Mountain View	38	Mountain view	1 - 4
Superior Room	38		1 - 2
Junior Family Superior Room	42		1 - 3
Family Superior Room	38		1 - 4
Master Family Superior Room	64	children Area	1 - 5
Superior Room - Mobility Accessible	38		1 - 2
Interconnecting Junior Family Superior Rooms	84		1 - 6

### Equipment

- Air conditioning
- Telephone
- TV Screen
- Wi-Fi Access
- Kettle - Coffee/tea making facilities
- Mini fridge at your disposal
- Iron and ironing board in the room
- Safe deposit box
- USB socket
- Heating
- Electricity : 100-127 V

### Bathroom

- Slippers
- Hair dryer
- Magnifying mirror
- Amenities : shampoo, shower gel, body lotion

### Services

- Luggage service
- Laundry service (extra charge)

## Deluxe



Name	Min. m <sup>2</sup>	Highlights	Capacity
Deluxe Room - Forest View	38	Forest view , Lounge area	1 - 3

### Equipment

- Air conditioning
- Baby bed (Must be pre-booked)
- Club Med Baby Welcome
- Telephone
- Sofa
- TV Screen
- Wi-Fi Access
- Kettle - Coffee/tea making facilities
- Iron and ironing board in the room
- Safe deposit box
- USB socket
- Heating
- Electricity : 100-127 V

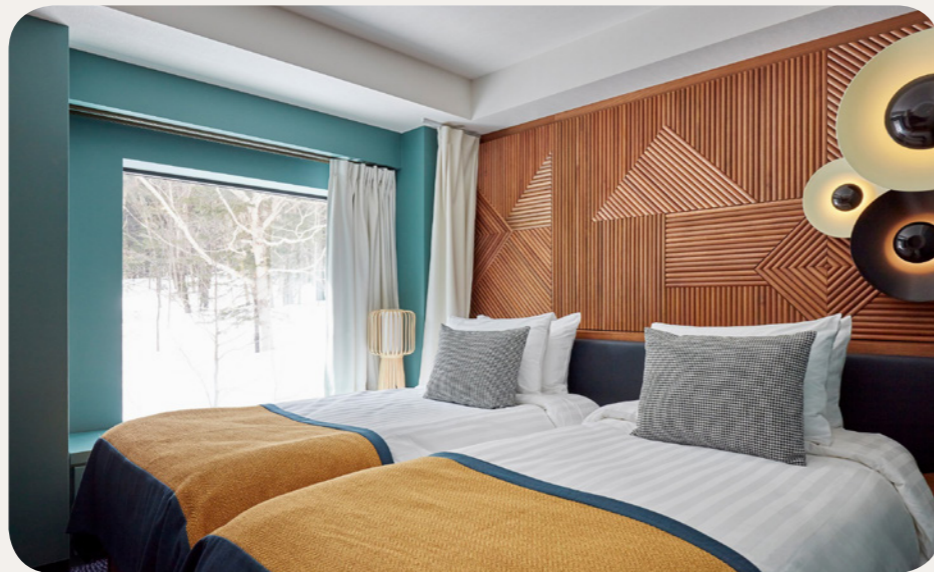
### Bathroom

- Bathtub
- Bathrobe
- Slippers
- Hair dryer
- Magnifying mirror
- Amenities : shampoo, shower gel, body lotion
- Amenities accessories : vanity kit, manicure kit, etc.

### Services

- Luggage service
- Minibar (non-alcoholic drinks) - refilled weekly
- Pool towel
- Laundry service (extra charge)

**Suite**



Name	Min. m <sup>2</sup>	Highlights	Capacity
Family Suite	55	Fir Tree View, Lounge area, Children's Separate Room	1 - 5
Master Family Suite – Duplex	72	Split-level family room, Children's Separate Room, Living Room	1 - 5

**Equipment**

- Air conditioning
- Baby bed (Must be pre-booked)
- Club Med Baby Welcome
- Telephone
- TV Screen
- Wi-Fi Access
- Espresso machine
- Kettle - Coffee/tea making facilities
- Iron and ironing board in the room
- Safe deposit box
- USB socket
- Heating
- Electricity : 100-127 V

**Bathroom**

- Bathtub
- Shower
- Bathrobe
- Slippers
- Hair dryer
- Magnifying mirror
- Amenities : shampoo, shower gel, body lotion
- Amenities accessories : vanity kit, manicure kit, etc.
- Bidet

**Services**

- Luggage service in room
- Inclusive of room service for continental breakfast
- Minibar (non-alcoholic drinks) - refilled daily
- Turn down service
- Pool towel
- Laundry service (extra charge)
- Cleaning on demand

# Sports & Activities

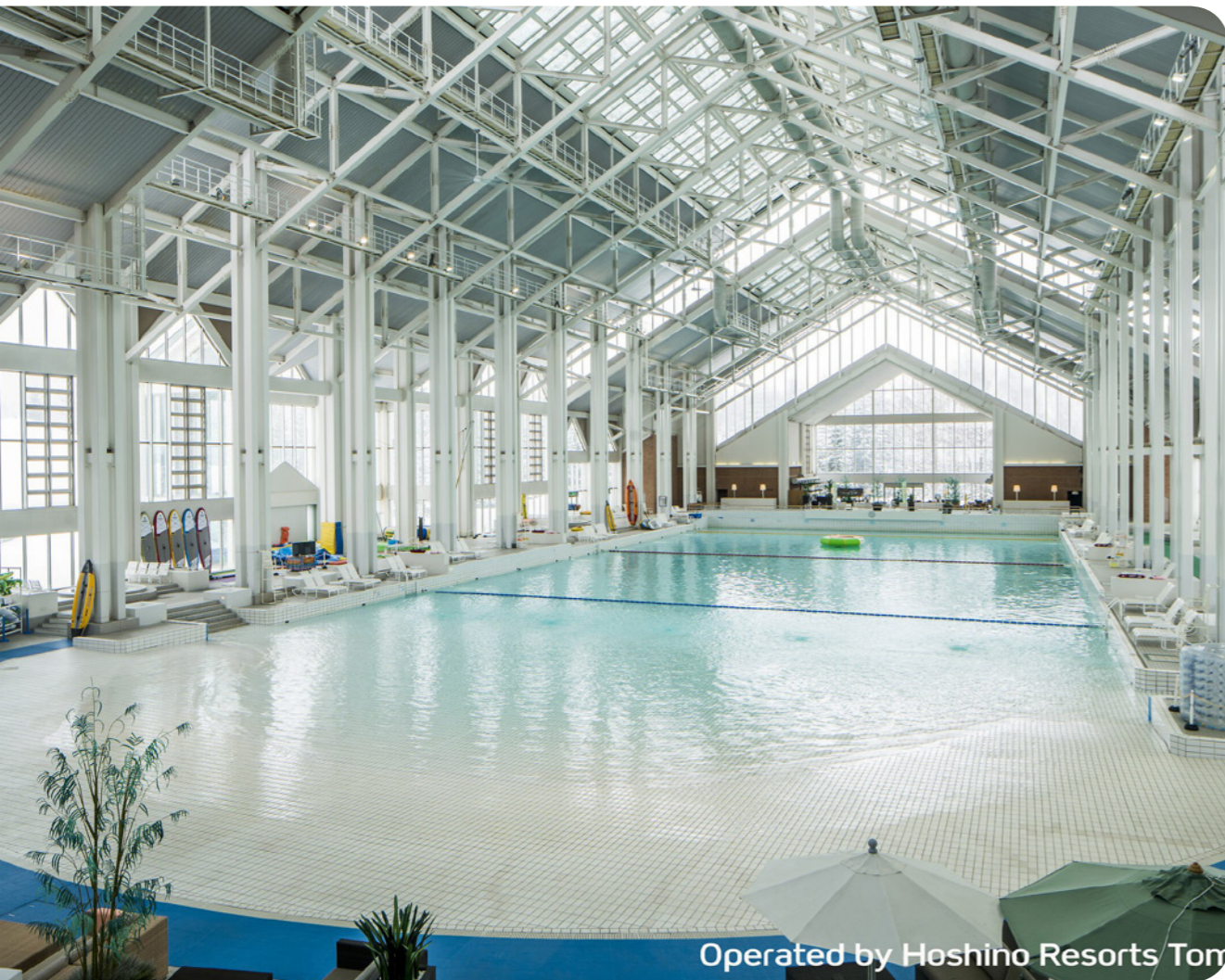


## Land Sports & Leisure

	Group Lessons	Free Access	At extra cost course	Min. age (years)	Dates of Availability
Golf*		✓	✓	16 years old	Always
Archery		✓		6 years old	Always
Trapeze & Circus		✓		4 years old	Always
Biking		✓		11 years old	Always
Fitness	Group lessons for all levels / Free access			16 years old	Always
Tennis	Initiation			4 years old	Always
Hiking	Group lessons for all levels / Free access			8 years old	Always
Entertainment		✓			Always
Swimming Pool		✓			Always
Bocceball	Free access				Always
Nature walk	Group lessons for all levels				Always
Pool table*			✓		Always
Table Tennis	Free access				Always
Japanese cooking class					Always
Excursion*		✓	✓		Always

\*on demand  
 \*\*Depending on weather conditions  
 \*\*\* Pre-bookable green fee packages at extra cost

# Swimming Pools



## Indoor swimming pool Mina Mina

Indoor Pool



G.Ms are offered free access to "Mina Mina Beach", which is the largest indoor wave pool in Japan. It is located right in front of the Resort.

Children are under the supervision of their parents or an accompanying adult.

**Heated**



## Excursions\*



### **Nature getaways :**

Bear Mountain / Furano & Biei Farm Sightseeing / River fishing

### **Sense of adventure :**

Kids rafting / Sorachigawa River Rafting

# Childrens' Services



## Childrens' Clubs

Age Range	Name	Included Activities	On demand activities	Dates of Availability
0 to 2 years		Family activities		Always
2 to 3 years	Petit Club Med*	Show time, Walks		Always
4 to 10 years	Mini Club Med +	Fun activities, Archery group classes, Flying trapeze group lessons, Tennis group lessons, Show time, Fun outings		Always
11 to 13 years	Teens Club Med 11-13 years old	New activities, Archery group classes, Flying trapeze group lessons, Show time, Free access to tennis courts		Always
14 to 17 years	Chill Pass Club Med 14-17 years old	New activities, Archery group classes, Flying trapeze group lessons, Show time, Free access to tennis courts		Always

\*on demand

## Childrens' Activities

Age Range	Included Activities	On demand activities
2 to 3 years	Family show time, Family "Big Snack"	
4 to 10 years	Family show time, Family "Big Snack", Family tournaments & games, Free access to tennis courts, Accompanied rides	
11 to 13 years	Family show time, Family "Big Snack", Family tournaments & games, Power walk, Free access to tennis courts, Accompanied rides	
14 to 17 years	Family show time, Family "Big Snack", Family tournaments & games, Power walk, Free access to tennis courts, Accompanied rides	



## Childrens' Services

Age Range	Included activities & facilities	On demand activites & facilities
0 to 2 years	Infirmary service, Lifeguard	
2 to 3 years	Infirmary service, Lifeguard	Pyjamas Club
4 to 10 years	Infirmary service, Lifeguard	Pyjamas Club

## Restaurants & Bars



### Bars

**Unkai bar**  
Main bar

**The Nest Bar**  
Wine Bar

## Restaurants



**Itara**  
Main Restaurant

Explore our signature buffet of international and Japanese flavours at Itara. Indulge in fresh seafood, flavourful miso ramen and an array of delectable international favourites in a contemporary decor inspired by Hokkaido's nature. Dine al fresco on the Unkai terrace in the summer season.

**Haku**  
Specialty Restaurant

The irresistible aroma of sizzling yakiniku truly captures the essence of this Japanese BBQ delicacy paired to perfection with fresh Hokkaido vegetables and seasoning. Open for dinner, the Haku offers an authentic dining experience in a setting inspired by Japanese indigenous culture.



# Practical Information



## Address

CLUB MED TOMAMU HOKKAIDO

NAKA-TOMAMU

Hokkaido

079-2204, Japan

No minimum age

## Hygiene & Safety

Safe Together. Club Med has implemented new hygiene and safety measures to offer you peace of mind and a most joyful experience.

## Easy arrival

Easy Arrival service\*

Register & manage your details online, we will have everything ready for your arrival :

Easy Check in – check out

Children's club enrolment

Club Med online Account

Available on your Member Space

\*Selection of services according to Resorts

## CHECK-IN/CHECK-OUT

Times of arrival/departure from the Resort

For GM arrival with stay package / stay package inclusive transfer only (flight not booked with Club Med):

For all stays, arrival between 3pm and 8pm. G.M@s who arrive early may be able to have lunch at extra cost, subject to availability.

Availability of rooms: between 3pm and 8pm.

Rooms to be vacated by 10am on day of departure, for departure from the Resort by 3pm (breakfast and lunch included).

Should any of these times change, the revised times will be given in your "Holiday Rendez-Vous".

For GM arrival with flights booked with Club Med:

- Room to be allocated as soon as possible according to availability

- Food & Beverage service access to resort facilities and F&B services are included from arrival until departure time

## Nearest arrival points

➔ Obihiro airport (70 mins.) ; Chitose airport (110 mins.) ; Chitose airport (120 mins.) ;  
Chitose Airport - Private transfer (60 mins.)

🚆 Tomamu railway station (5 mins.)

## My Club Med App

My Club Med App : All you need is My Club Med App - your ideal travel companion to prepare and organize your stay. Discover the Resort map, facilities and activities, and enjoy dedicated services to make the most of your stay.

Download My Club Med App on the App Store or Google Play.