

Japan

# Tomamu Hokkaido



## Resort highlights

- Hit the slopes at night on Tomamu's great powder snow
- Break the ice! Enjoy snow sledging and the activities on offer at the Ice Village\*
- Experience the fun at Mina Mina Beach, the largest indoor wave pool in Japan
- Savour the farm-to-table Hokkaido speciality - Yakniku barbecue
- Discover the flavour of Japan, with tasting sessions of Japanese whisky and sake

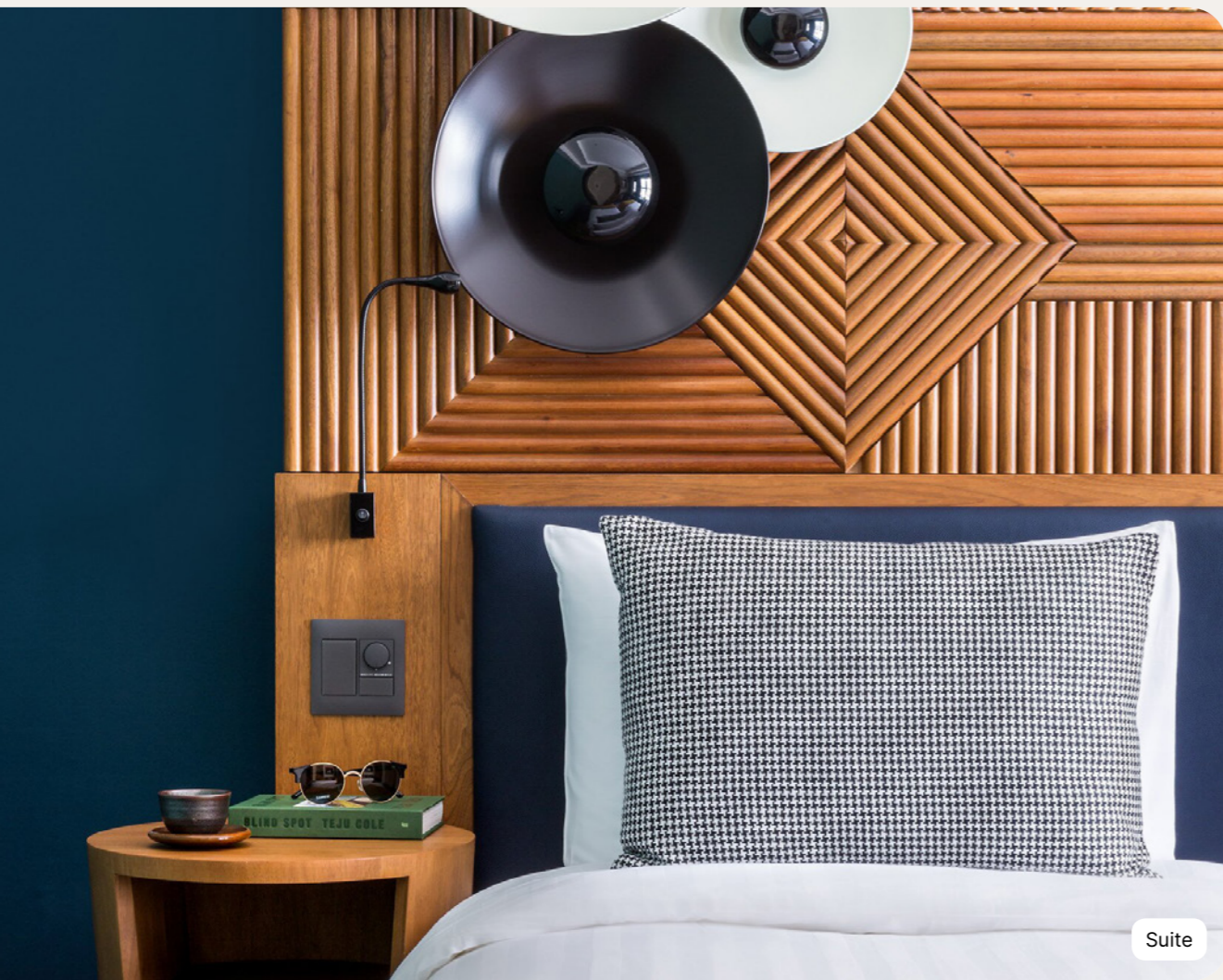


# Summary

<b>Accommodation</b>	<b>4</b>
<b>Sports &amp; Activities**</b>	<b>12</b>
<b>Swimming pools</b>	<b>16</b>
<b>Children</b>	<b>18</b>
<b>Restaurants &amp; Bars</b>	<b>20</b>
<b>Practical Information</b>	<b>23</b>



# Accommodation



Suite



Deluxe



Superior

# Superior



Name	Minimum area (sq ft)	Highlights	Capacity
Family Superior Room - Mountain View	409.03	Mountain view	1 - 4
Superior Room	409.03		1 - 2
Junior Family Superior Room	452.08		1 - 3
Family Superior Room	409.03		1 - 4
Master Family Superior Room	688.89	children Area	1 - 5
Superior Room - Accessible	409.03		1 - 2
Connecting Junior Family Superior Rooms	904.17		1 - 6

### Equipment

- Air conditioning
- Telephone
- Television(s)
- Internet
- Kettle - Coffee/tea making facilities
- Mini fridge (non provisioned)
- Iron & ironing-board
- Safe deposit box
- USB socket
- Heating
- Electricity: 100-127 V

### Bathroom

- Slippers
- Hair dryer
- Magnifying mirror
- Amenities : shampoo, shower gel, body lotion

### Services

- Luggage service
- Laundry service (extra charge)

## Deluxe



Name	Minimum area (sq ft)	Highlights	Capacity
Deluxe Room - Forest View	409.03	Forest view , Lounge area	1 - 3

### Equipment

- Air conditioning
- Baby bed (on demand)
- Baby welcome pack
- Telephone
- Sofa
- Television(s)
- Internet
- Kettle - Coffee/tea making facilities
- Iron & ironing-board
- Safe deposit box
- USB socket
- Heating
- Electricity: 100-127 V

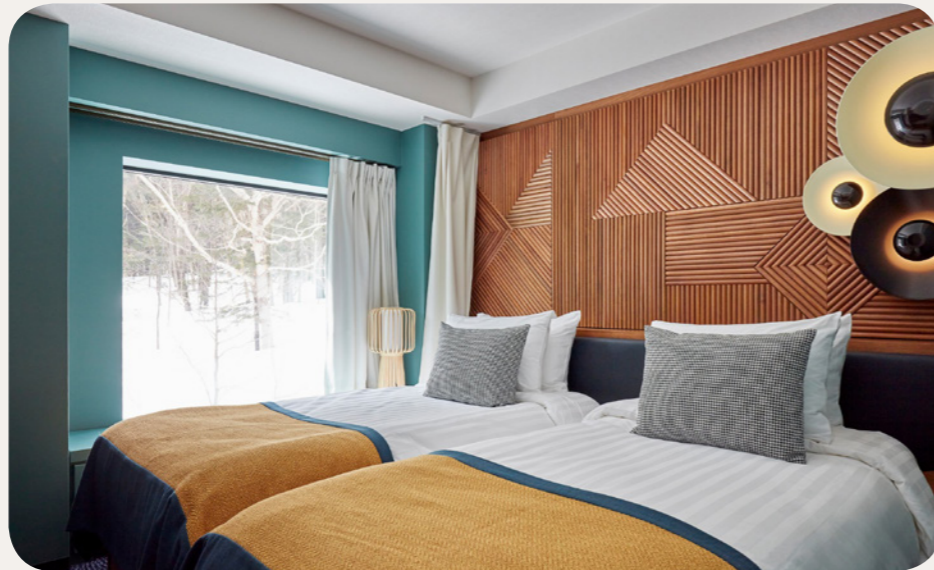
### Bathroom

- Bathtub
- Bathrobe
- Slippers
- Hair dryer
- Magnifying mirror
- Amenities : shampoo, shower gel, body lotion
- Amenities accessories : vanity kit, manicure kit, etc.

### Services

- Luggage service
- Minibar (non-alcoholic drinks) - refilled weekly
- Pool towel
- Laundry service (extra charge)

**Suite**



Name	Minimum area (sq ft)	Highlights	Capacity
Family Suite	592.02	Fir Tree View, Lounge area, Children's Separate Room	1 - 5
Master Family Suite - Mountain View	775	Split-level family room, Children's Separate Room, Living Room	1 - 5

**Equipment**

- Air conditioning
- Baby bed (on demand)
- Baby welcome pack
- Telephone
- Television(s)
- Internet
- Espresso machine
- Kettle - Coffee/tea making facilities
- Iron & ironing-board
- Safe deposit box
- USB socket
- Heating
- Electricity: 100-127 V

**Bathroom**

- Bathtub
- Shower
- Bathrobe
- Slippers
- Hair dryer
- Magnifying mirror
- Amenities : shampoo, shower gel, body lotion
- Amenities accessories : vanity kit, manicure kit, etc.
- Bidet

**Services**

- Your luggage delivered to and picked up from your Suite
- Room Service included for continental breakfast
- Minibar (non-alcoholic drinks) - refilled daily
- Lunch offered if early arrival (prior to 3.00pm)
- Turndown Service
- Pool towel
- Laundry service (extra charge)
- Cleaning on demand

# Sports & Activities\*\*



## Winter Sports

	Group lessons	Free access	At extra cost class	Min. age (years)
Ski	All levels / Free access			4 years old
Snowboard	Lessons for all levels (Japanese / English) / All levels			4 years old
Hiking*	Free access		✓	11 years old

\*on demand (at extra cost)  
 \*\*depending on weather conditions



## Land Sports & Leisure

	Group lessons	Free access	At extra cost class	Min. age (years)
Fitness	Group lessons for all levels / Free access			16 years old
Entertainment		✓		
Swimming Pool		✓		
Activities in the ski station*			✓	
Pool table*			✓	
Snow mobile*			✓	
Japanese cooking class				
Excursion*		✓	✓	

\*on demand (at extra cost)  
\*\*depending on weather conditions



# Swimming pools

## Indoor swimming pool Mina Mina

Indoor pool



Opening dates: 1st December 2024 to 1st April 2025.

G.Ms are offered free access to "Mina Mina Beach", which is the largest indoor wave pool in Japan. It is located right in front of the Resort.

Children are under the supervision of their parents or an accompanying adult.

**Heated**



# Children



## Children's Clubs

Age	Name	Included Activities	By request at an extra charge	Dates available
2 to 3 years	Petit Club Med*	Show time, Early learning, Walks		Always
4 to 10 years	Mini Club Med +	Group ski lessons for kids, Snowboard group lessons , Show time	Snow sledding	Always
11 to 13 years	Teens Club Med	New activities, Group ski lessons for teens, Snowboard group lessons , Show time		Always
14 to 17 years	Club Med Chill Pass	New activities, Group ski lessons for teens, Snowboard group lessons , Show time		Always

## Children's activities

Age	Included Activities	By request at an extra charge
2 to 3 years	Club Med Amazing Family!, Family show time, Family "Big Snack"	
4 to 10 years	Club Med Amazing Family!, Family show time, Family "Big Snack"	
11 to 13 years	Club Med Amazing Family!, Family show time, Family "Big Snack", Pool free Access	
14 to 17 years	Club Med Amazing Family!, Family show time, Family "Big Snack", Pool free Access	

\*on demand (at extra cost)

## Restaurants & Bars



### Bars

**Unkai bar**  
Main bar

**The Nest Bar**  
Wine Bar

## Restaurants



### Itara Main Restaurant

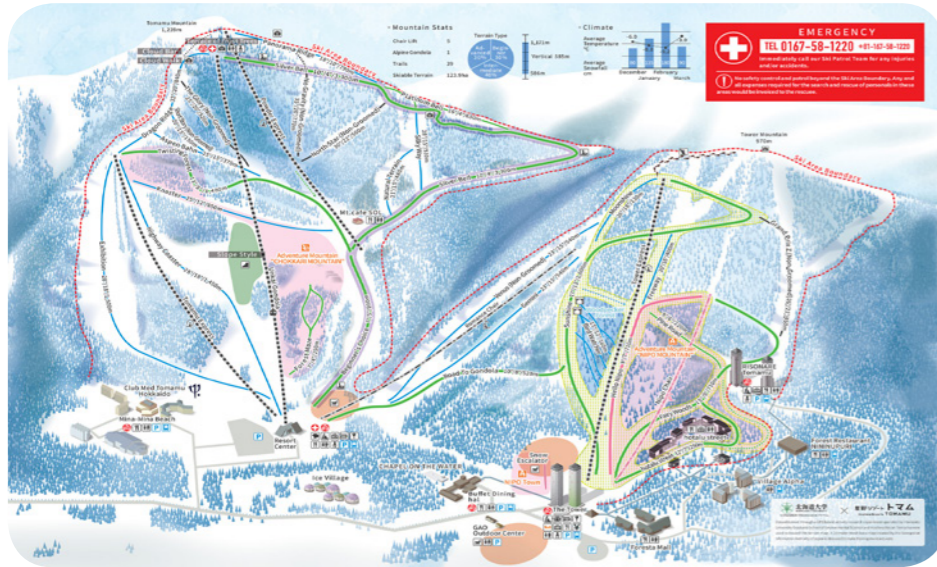
Savour a variety of international and Japanese delights, including the freshest fish, from our main buffet restaurant. With 4 distinct spaces, each inspired by Hokkaido regions, the setting will surely surprise. Bucolic Valley, Farmhouse, Sea of clouds, and Rays of sun, with the Unkai Terrace (available in summer only), each offers a unique gastronomic adventure to share.

### Haku Specialty Restaurant

Imagine the scent of fresh yakiniku steaming off the grill. Haku, our Hokkaido Resort speciality restaurant, prepares this beef Japanese delicacy to perfection paired with a selection of delicious side dishes to complement. Open for dinner, enjoy an authentic dining experience with a design inspired by Japanese indigenous tribes to cap off an unforgettable day.



## Ski area map



## Tomamu

1171m

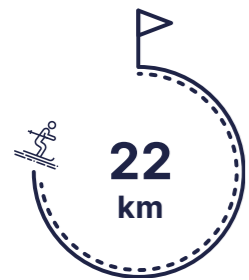
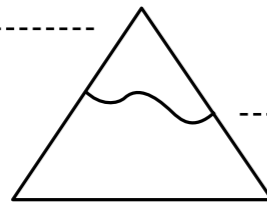
Maximum altitude

540m

Ski-in / Ski-out Resort

586m

Minimum altitude



Alpine ski slopes

### Number of ski slopes



Freeride Zone(s)



# Practical Information

## Address

**CLUB MED TOMAMU HOKKAIDO**  
**NAKA-TOMAMU**  
 Hokkaido  
 079-2204, Japan

## Hygiene & Safety

Safe Together. Club Med has implemented new hygiene and safety measures to offer you peace of mind and a most joyful experience.

## Easy arrival

Easy Arrival service\*  
 Register & manage your details online, we will have everything ready for your arrival :  
 Easy Check in – check out  
 Children's club enrolment  
 Club Med online Account  
 Available on your Member Space  
 \*Selection of services according to Resorts

## Check-in/Check-out

Times of arrival/departure from the Resort  
 For GM arrival with stay package / stay package inclusive transfer only (flight not booked with Club Med):  
 For all stays, arrival between 3pm and 8pm. G.M@s who arrive early may be able to have lunch at extra cost, subject to availability.  
 Availability of rooms: between 3pm and 8pm.  
 Rooms to be vacated by 10am on day of departure, for departure from the Resort by 3pm (breakfast and lunch included).  
 Should any of these times change, the revised times will be given in your "Holiday Rendez-Vous".  
 For GM arrival with flights booked with Club Med:  
 - Room to be allocated as soon as possible according to availability  
 - Food & Beverage service access to resort facilities and F&B services are included from arrival until departure time

## Nearest arrival points

- ➔ Obihiro airport (70 min.) ; Chitose airport (110 min.) ; Chitose airport (120 min.) ; Chitose Airport - Private transfer (60 min.)
- 🚆 Tomamu railway station (5 min.)

## My Club Med App

My Club Med App : All you need is My Club Med App - your ideal travel companion to prepare and organize your stay. Discover the Resort map, facilities and activities, and enjoy dedicated services to make the most of your stay.  
 Download My Club Med App on the App Store or Google Play.